

Exterior Masonry Coatings Formulated
With **PLIOTEC™ LEB Resins**

PLIOTEC™
Resins



**The Best Exterior Masonry Coatings
Protect And Offer Perfect Decoration**

Low Efflorescence, Low Exudation

www.pliolite.com

PLIOTEC™
Resins

PLIOTEC™ LEB,
The Best Exterior Masonry Coatings



Innovative Technology

PLIOTEC™ LEB (Low Exudation Binder) technology is a water-based resin designed to improve the performance of exterior masonry paints and coatings.

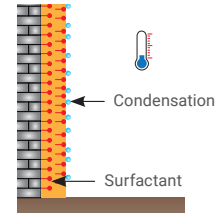
PLIOTEC™ LEB Resins Offers:

- Superior resistance to surfactant leaching (exudation) and efflorescence
- Excellent early rain resistance
- Color retention
- Dirt pick-up resistance
- Flexibility and breathability: bridges cracks and allows vapor permeability

Exudation Resistance

Modern exterior masonry coatings must protect the substrate while offering deeper, striking colors. **Surfactant leaching, or “snail trails,” is a common but unpredictable issue caused by unfavourable temperature and humidity during paint drying.**

Formation of condensation on freshly painted exterior facade due to temperature falling below dew point.



Moisture causes surfactants to migrate to surface.

When condensation subsequently dries, surfactants are deposited on the surface of the paint, causing staining or discoloration.

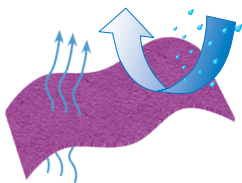
Exudation is a significant issue for semi-flexible high build coatings, which contain many surfactants and are applied at high thicknesses. This problem is exacerbated by Point-Of-Sales tinting and the trend for deep tones, leading to more free surfactants from colorants and additives.

Synthomer's Low Exudation Binder is designed to minimize free surfactants while maintaining mechanical stability. PLIOTEC™ LEB resins reduces the amount of exudable water-soluble components compared to conventional water-based technologies, making it more effective for facades.

Flexibility with Permeability

To meet EN 1062-1, high build coatings must bridge 100 µm cracks at 200-400 µm thickness.

PLIOTEC™ LEB achieves this flexibility through precise polymer Tg and structure control. Its high pigment binding power allows higher PVC formulations, ensuring breathability and crack-bridging ability.



High build masonry coatings with **PLIOTEC™ LEB** can bridge cracks over 100 µm and achieve a moisture vapor permeability (Sd) between 0.14 and 1.4 m (V2 medium class).

Main Applications

- Flat and high build masonry facade paints (EN ISO 1062-1 / A0 and A1)
- Renovation of old elastomeric coatings
- Topcoat for ETICS (Exterior Thermal Insulation Coating Systems)
- House plinths (bases of exterior walls), window reveals, and sills

Additional Key Features

- High pigment binding efficiency
- Superior adhesion to porous masonry substrates
- Robust film formation, even under adverse conditions
- Early rain resistance
- Excellent exterior weathering (UV resistance, color retention, dirt pick-up resistance)
- APEO-free, no added formaldehyde, low VOC

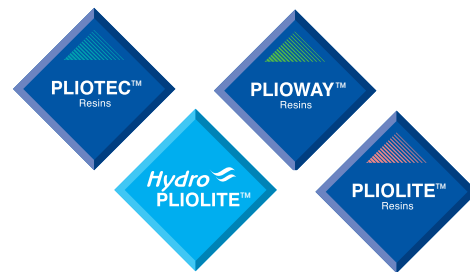


Paints bearing the **PLIOTEC™** logo have passed rigorous technical specifications to ensure they meet customer requirements.

Make Your Work Easier...

Choose Coatings

Formulated With **PLIOTEC™** Resins!



For More Information, Contact Your Dealer

or:

Synthomer

10 Greycoat Place
London SW1 1SB
United Kingdom

Email: coatings@synthomer.com

www.pliolite.com

Disclaimer: This information or data, including any advice or recommendation(s) (collectively, "Information"), provided by Synthomer plc and/or its affiliates (collectively, "Synthomer") are not intended to, nor do they, constitute professional advice or services. INFORMATION IS PROVIDED ONLY AS OF THE DATE HEREOF ON AN "AS IS" AND "AS AVAILABLE" BASIS AND SYNTHOMER DOES NOT WARRANT THE ACCURACY, TIMELINESS, OR COMPLETENESS OF THE INFORMATION. TO THE MAXIMUM EXTENT PERMITTED BY APPLICABLE LAW, SYNTHOMER DISCLAIMS (I) ALL IMPLIED WARRANTIES, INCLUDING AS TO CONTINUED PRODUCTION, FITNESS FOR PARTICULAR PURPOSE, NON-INFRINGEMENT AND MERCHANTABILITY; (II) ALL LIABILITY ARISING OUT OF THE APPLICATION OR USE OF ANY PRODUCT, OR THE RELIANCE BY ANY PARTY ON THE INFORMATION (INCLUDING INFRINGEMENT OF THIRD-PARTY INTELLECTUAL PROPERTY RIGHTS); AND (III) ALL LIABILITY, INCLUDING WITHOUT LIMITATION, FOR SPECIAL, INDIRECT, INCIDENTAL, OR CONSEQUENTIAL LOSSES. Any information concerning any possible use or application of Synthomer products is given by us in good faith and it is entirely for the recipient to satisfy itself fully as to the suitability of Synthomer products for any particular purpose. Synthomer products are sold subject to Synthomer's standard terms and conditions of sale which are available from www.synthomer.com/te. Unless otherwise noted, Synthomer owns all right, title and interest in the information and all other intellectual property rights and data associated with this information without limitation. All trademarks and logos are the property of Synthomer. Copyright © 2026 Synthomer, all rights reserved.